



EOC
EUROASIAN
ONLINE
CONFERENCES

ENGLAND CONFERENCE

**INTERNATIONAL CONFERENCE ON
MULTIDISCIPLINARY STUDIES AND
EDUCATION**



INTERNATIONAL CONFERENCE ON MULTIDISCIPLINARY STUDIES AND EDUCATION: a collection scientific works of the International scientific conference – London, England, 2026. Issue 4

Languages of publication: Uzbek, English, Russian, German, Italian, Spanish

The collection consists of scientific research of scientists, graduate students and students who took part in the International Scientific online conference «**INTERNATIONAL CONFERENCE ON MULTIDISCIPLINARY STUDIES AND EDUCATION**». Which took place in London, 2026.

Conference proceedings are recommended for scientists and teachers in higher education establishments. They can be used in education, including the process of post - graduate teaching, preparation for obtain bachelors' and masters' degrees. The review of all articles was accomplished by experts, materials are according to authors copyright. The authors are responsible for content, researches results and erro



ANATOMY OF THE CARDIOVASCULAR SYSTEM

Ibrohimjonova Sumbulaxon Inomjon qizi,

Student of Dentistry, Faculty of Medicine
Termez University of Economics and Service

sumbulaibrohimjonova@gmail.com

Kholmatov Muslimbek Mamatovich,

Assistant of the Department of Morphological Sciences, Faculty of Medicine
Termez University of Economics and Service

xolmatovmuslimbek@gmail.com

Abstract: This article analyzes the anatomical and functional structure of the cardiovascular system from a systematic perspective. The topographical position of the heart in the thoracic cavity, the layers of its wall, the structure of the atria and ventricles, the valvular apparatus, the conduction system, coronary circulation, and the morphological features of the major blood vessels are discussed in sequence. The main purpose of the article is to explain the anatomy of the heart and blood vessels to dentistry students not only descriptively, but also through clinical and functional reasoning. The analysis shows that a profound knowledge of cardiac anatomy is important not only for understanding cardiovascular diseases, but also for making correct dental decisions related to anesthesia, arterial pressure, hemodynamic stability, the risk of infective endocarditis, and systemic diseases. The heart is a four-chambered muscular organ whose valves maintain one-way blood flow, while its conduction system ensures rhythmic contraction. Variations in the anatomy of the coronary arteries and major vessels are of considerable clinical significance. For this reason, the relationship among anatomical norm, morphological variation, and clinical relevance is presented as the central idea of the article.

Keywords: heart, blood vessels, atrium, ventricle, coronary arteries, conduction system, hemodynamics, anatomy, dentistry, clinical correlation

Introduction

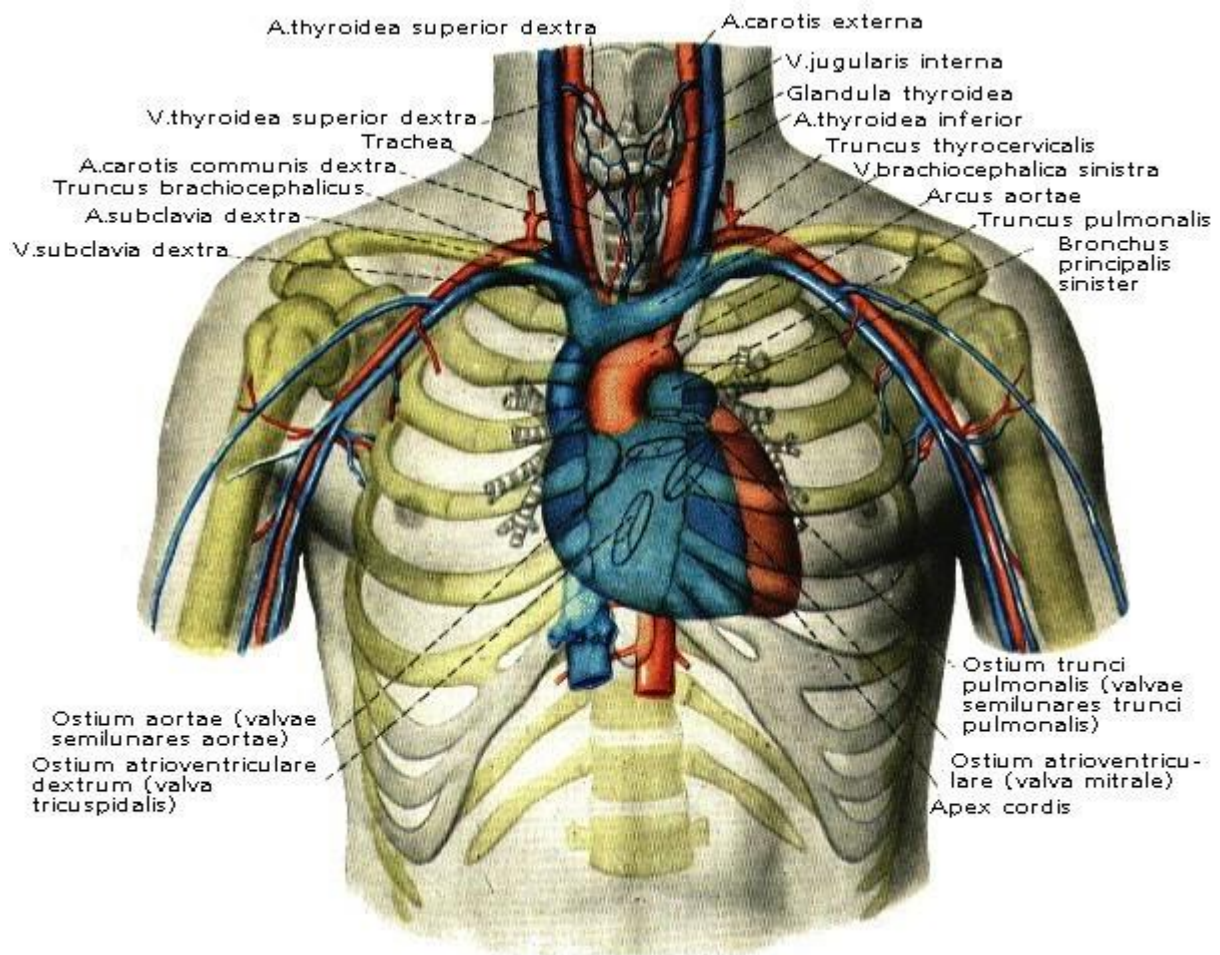
The cardiovascular system is one of the central systems of the body, performing such vital functions as transport, trophic support, gas exchange, thermoregulation, and the maintenance of homeostasis. Through the coordinated work of the pumping activity of the heart together with the arteries, capillaries, and veins, oxygen and nutrients are delivered to tissues, while metabolic products are transported to the excretory organs. In modern anatomical and physiological





literature, the cardiovascular apparatus is interpreted as a closed tubular transport system in which the heart serves as the principal driving force of blood movement, whereas the vessels function as distributing, exchange, and returning segments.

Although the study of cardiac anatomy is essential for every branch of medicine, it also has special relevance in dental education. The reason is that pain, stress, anesthetic agents, bleeding, endocarditis prophylaxis, and the individualized management of patients suffering from hypertension or arrhythmia during dental procedures all depend directly on knowledge of the cardiovascular system. In addition, dental treatment protocols differ in patients with congenital heart defects, rheumatic processes, or chronic heart failure when compared with protocols used for otherwise healthy individuals.



Anatomically, the heart lies in the middle mediastinum of the thoracic cavity, with most of it situated behind the sternum and slightly to the left. It consists of four chambers—the right and left atria and the right and left ventricles. This





arrangement functions according to a two-pump principle: the right heart propels blood into the pulmonary circulation, whereas the left heart pumps blood into the systemic circulation. Thus, the shape and position of every anatomical element of the heart are closely connected with its functional role.

From this perspective, it is important to study the cardiovascular system not only through the names and positions of organs, but also in connection with the direction of blood flow, the mechanical role of the valves, the electrical control of myocardial contraction, coronary nourishment, and clinically relevant risk factors. On the basis of this integrative approach, the present article analyzes the macroanatomical and partially functional features of the heart.

Materials and Methods

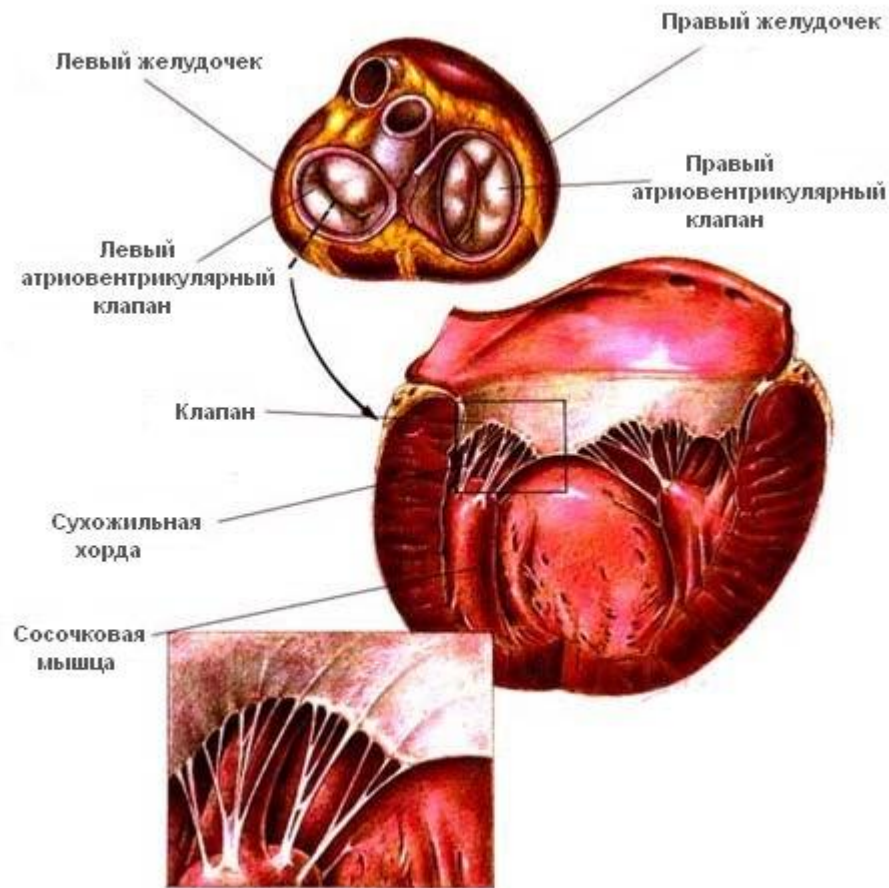
This study used the methods of systemic analysis, comparative anatomical description, clinical-correlation interpretation, and synthesis of the literature. Contemporary educational and reference sources on cardiac anatomy, the morphology of the major blood vessels, and coronary circulation were selected as the main materials. Two criteria were treated as primary during source selection: first, the scientific reliability of the anatomical description; and second, the possibility of linking this knowledge to practical medicine, especially to dental practice.

During the analytical process, the external structure of the heart, its internal cavities, valves, wall layers, conduction system, and coronary vessels were divided into separate blocks. These blocks were then evaluated in terms of their functional interrelations—for example, the relationship between ventricular wall thickness and hemodynamic load, the way valve structure limits retrograde blood flow, and the connection between the conduction system and the synchrony of cardiac contractions. Throughout the analysis, morphological norms were





distinguished from clinically significant variants.



The article is not experimental; rather, it has the character of a scientific review. Therefore, the results are presented not through numerical statistical indicators, but through the scientific generalization of anatomical facts and their interpretation from pedagogical and clinical standpoints. Such an approach enables medical students to integrate knowledge gained in different disciplines into a single logical system.

Results

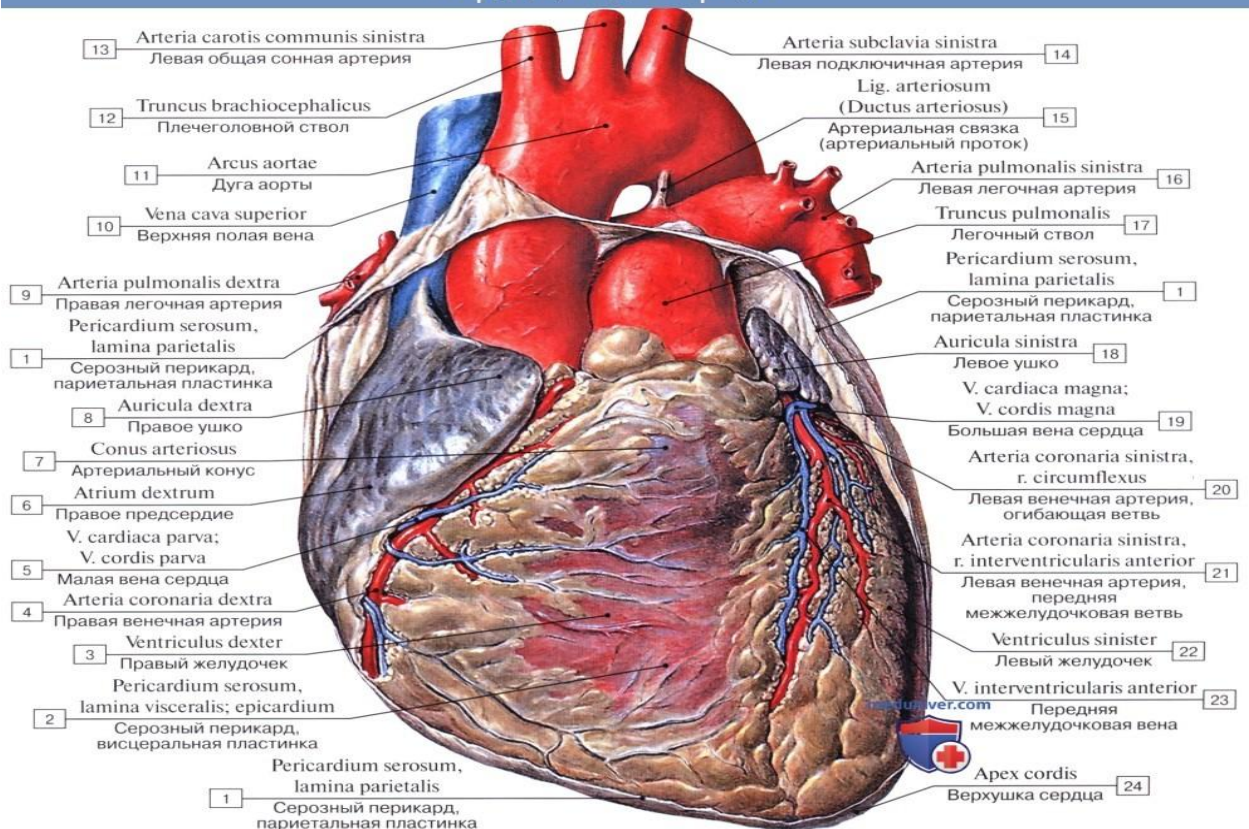
The analysis showed that the general structure of the heart is fully adapted to its main task—the continuous and directed maintenance of blood circulation. The heart is enclosed within the pericardium, and its wall consists of the endocardium, myocardium, and epicardium. The endocardium lines the cardiac chambers from within; the myocardium is the principal contractile layer and is especially well developed in the wall of the left ventricle; and the epicardium forms the serous covering of the cardiac surface. The fact that the wall of the left



ventricle is thicker than that of the right ventricle is explained by its role in pumping blood throughout the whole body under high pressure.

The internal structure of the cardiac chambers also reflects functional differentiation. The right atrium receives venous blood through the superior vena cava, inferior vena cava, and the coronary sinus. The right ventricle sends this blood into the pulmonary artery and thus into the pulmonary circulation. The left atrium receives oxygenated blood from the lungs through four pulmonary veins, and this blood is then ejected from the left ventricle into the aorta. Therefore, the atria primarily act as receiving reservoirs, whereas the ventricles serve as the pumping chambers that generate effective ejection.

Сердце, вид спереди



- 1 – Serous pericardium, parietal layer; 2 – Serous pericardium, visceral layer, epicardium; 3 – Right ventricle; 4 – Right coronary artery; 5 – Small cardiac vein; 6 – Right atrium; 7 – Conus arteriosus; 8 – Right auricle; 9 – Right pulmonary artery; 10 – Superior vena cava; 11 – Arch of aorta; 12 – Brachiocephalic trunk; 13 – Left common carotid artery; 14 – Left subclavian artery; 15 – Ligamentum arteriosum (Ductus arteriosus); 16 – Left pulmonary artery; 17 – Pulmonary trunk; 18 – Left auricle; 19 – Great cardiac vein; 20 – Left coronary artery, circumflex branch; 21 – Left coronary artery, anterior interventricular branch; 22 – Left ventricle; 23 – Anterior interventricular vein; 24 – Apex of heart

The valvular apparatus is one of the most important mechanical components of cardiac anatomy. The tricuspid valve lies between the right atrium and right ventricle, while the mitral valve lies between the left atrium and left ventricle. The pulmonary and aortic semilunar valves are located, respectively, in the outflow



tracts of the right and left ventricles. These valves ensure that blood flows only in one direction and prevent regurgitation. The chordae tendineae and papillary muscles keep the atrioventricular valves from prolapsing back toward the atria during systole.

The cardiac conduction system is also a clear example of the exact unity of anatomy and function. The sinoatrial node is located in the right atrium near the opening of the superior vena cava and acts as the physiological pacemaker. From there, impulses travel through the atrial fibers to the atrioventricular node, then through the bundle of His, its right and left bundle branches, and finally along the Purkinje fibers to the ventricles. In this way, the atria contract first and the ventricles contract afterward in a coordinated sequence.

Coronary circulation is the specialized system that nourishes the heart muscle itself. The right and left coronary arteries originate from the initial part of the aorta. The left coronary artery usually divides into the anterior interventricular branch and the circumflex branch, supplying most of the left ventricle and the anterior segments of the interventricular septum. The right coronary artery supplies the right-sided cardiac chambers and, in some cases, also the inferior wall and the posterior interventricular region. The type of coronary dominance is of great clinical importance because it can influence the size of the infarct zone and the strategy of revascularization.

The morphology of the major blood vessels forms the external continuation of cardiac activity. The aorta, pulmonary trunk, superior and inferior venae cavae, and pulmonary veins are the main vessels directly connected with the heart. In arteries, the wall is rich in smooth muscle and elastic elements, whereas veins have a relatively wider lumen and thinner walls. Capillaries are the finest vascular segment and are specialized for exchange. Thus, differences in the structure of vessel walls are shaped according to their hemodynamic functions.

Table 1. Main cardiac structures and their principal anatomical and functional characteristics

Structure	Main description	Functional significance
Right atrium	Receives blood from the venae cavae and coronary sinus	Collects venous blood and transfers it to the right ventricle
Right ventricle	Connected to the	Pumps blood into the





Structure	Main description	Functional significance
	pulmonary trunk	pulmonary circulation
Left atrium	Receives blood from four pulmonary veins	Transfers oxygenated blood to the left ventricle
Left ventricle	Has a thick myocardium and is connected to the aorta	Pumps blood into the systemic circulation
Valvular apparatus	Tricuspid, mitral, aortic, and pulmonary valves	Maintains unidirectional blood flow
Conduction system	SA node, AV node, His bundle, Purkinje fibers	Ensures rhythmic and coordinated contraction

Discussion

The obtained results show that a structure-function approach is the most effective model for studying the anatomy of the heart. A student may memorize the atria, ventricles, or valves as separate parts, but unless the hemodynamic role of these elements is understood, such knowledge cannot be transferred into practice. For example, the thickness of the left ventricular myocardium should be interpreted not merely as a morphological feature, but as a compensatory adaptation to the high-pressure systemic circulation.

From a dental point of view, knowledge of cardiac anatomy helps ensure the safe assessment of the patient's condition. In patients with mitral defects, arrhythmias, artificial valves, rheumatic lesions, or the risk of infective endocarditis, it is necessary to evaluate the general somatic state before performing procedures in the oral cavity. In patients with impaired coronary circulation, reactions to stress, pain, and vasoconstrictor-containing anesthetics may differ substantially. For this reason, a deep understanding of heart anatomy broadens the clinical thinking of the dentist.

Another important issue is the existence of anatomical variants and congenital anomalies of the heart. Septal defects, transposition of the great vessels, valvular stenoses, or unusual origins of the coronary arteries alter clinical manifestations, instrumental diagnosis, and treatment tactics. A student who has





not thoroughly mastered the anatomical norm cannot fully understand pathological conditions. Therefore, it is more effective to link anatomy with clinical disciplines through vertical integration than to teach it in isolation.

A further strength of the approach presented in this article is that the heart is analyzed not only as an independent organ, but together with the major vessels and the microcirculatory segment. Such a perspective makes it possible to understand blood pressure, peripheral resistance, venous return, and tissue perfusion as interconnected phenomena. As a result, the student begins to perceive the cardiovascular system not as a set of fragmented topics, but as a single morphofunctional complex.

Conclusion

The structural and functional relationships among the topography of the heart, its chambers, wall layers, valves, conduction system, and coronary vessels determine the principal mechanisms that sustain life in the organism. In this article, the clinical significance of cardiac anatomy has been highlighted in a way that is particularly useful for dentistry students, because in their future practice they will frequently encounter patients with cardiac pathology and will need to make safe treatment decisions.

The study also substantiates the need to integrate the teaching of the cardiovascular system with physiology, pathophysiology, and clinical disciplines. Such a model of education develops not only memorization, but also the student's ability to analyze, identify cause-and-effect relations, and think appropriately in clinical situations. Thus, the topic of cardiac anatomy holds fundamental, practical, and strategic importance in modern medical education.

References

1. Rehman I., Rehman A. Anatomy, Thorax, Heart. StatPearls. NCBI Bookshelf. Last update: 28.08.2023.
2. Bamalan O.A., Jozsa F., Soos M.P. Anatomy, Thorax, Heart Great Vessels. StatPearls. NCBI Bookshelf. Last update: 25.07.2023.
3. Chaudhry R., Rahman S., Law M.A. Anatomy, Thorax, Heart Arteries. StatPearls. NCBI Bookshelf. Last update: 24.07.2023.
4. Human cardiovascular system. Encyclopaedia Britannica. Last updated: 05.03.2026.
5. Felner J.M. An Overview of the Cardiovascular System. Clinical Methods. NCBI Bookshelf.
6. Introduction to the Heart, Circulation, and Blood Flow. OpenStax Pharmacology for Nurses. 2024.

